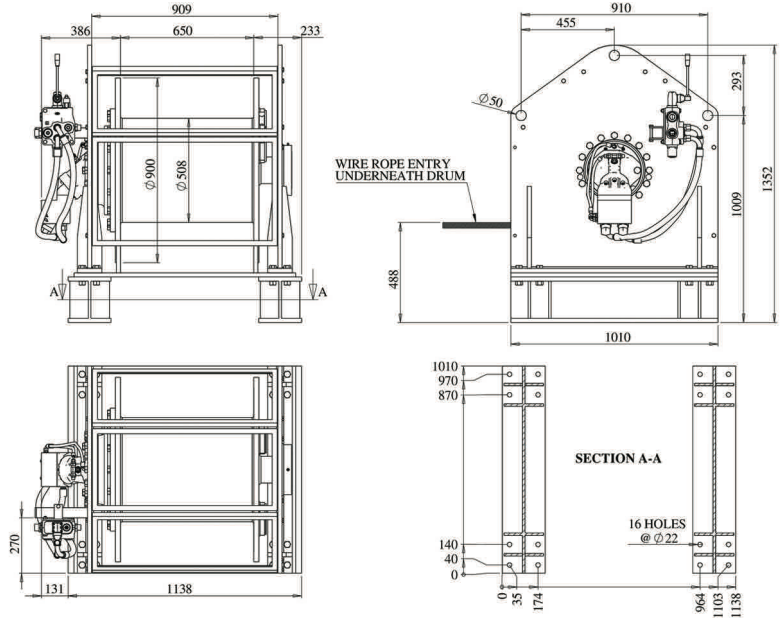


# RENTAL FLEET 10 TONNE HYDRAULIC WINCH



## Features

- All welded steel frame construction and fabricated base
- Compact design for minimum footprint
- Direct drive drum through in-line planetary gearing
- Rexroth axial piston hydraulic motor
- Manifold-mounted load control block with counterbalance valves and brake shuttle
- Automatic multi-plate transmission brake with nominal rating 16.5 tonnes on 1st layer
- Directional control valve with integral relief valve, arranged for open circuit
- Drum guard
- Winch weight 1000kg nett, excluding wire rope

## The winch is in accordance with:

- ISO 9001:2008
- Machinery Directive 2006/42/EC
- Pressure directive 97/23/EC
- LOLER
- PUWER

## Performance – CW-110 Winch

Rope layer	1	2	3	4	5	6
Static lift kg	11000	10100	9300	8650	8100	7600
Mean working diameter mm	532	580	628	676	724	772
Capacity (24mm wire rope)	41	87	136	189	246	307
Max rope speed m/min	23	25	28	30	32	34

Performance given at maximum supply of 135 L/min @ 250 bar

## Optional extras:

- Wire rope
- HPU
- Running line meter
- Deck weld base
- Sheaves & fairleads