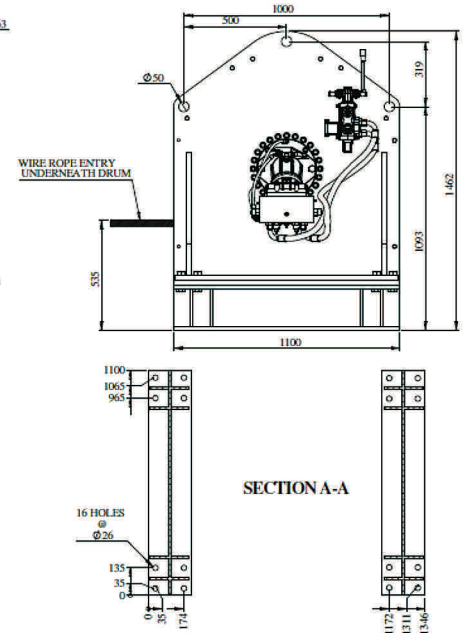
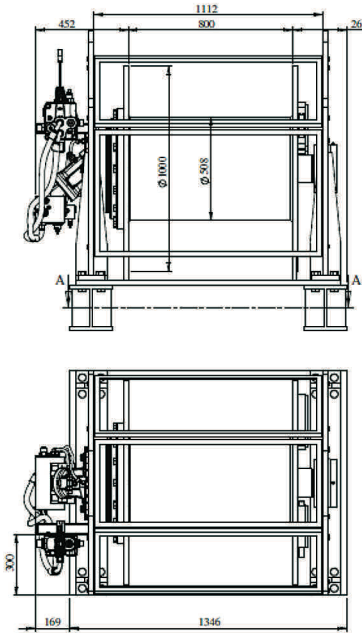
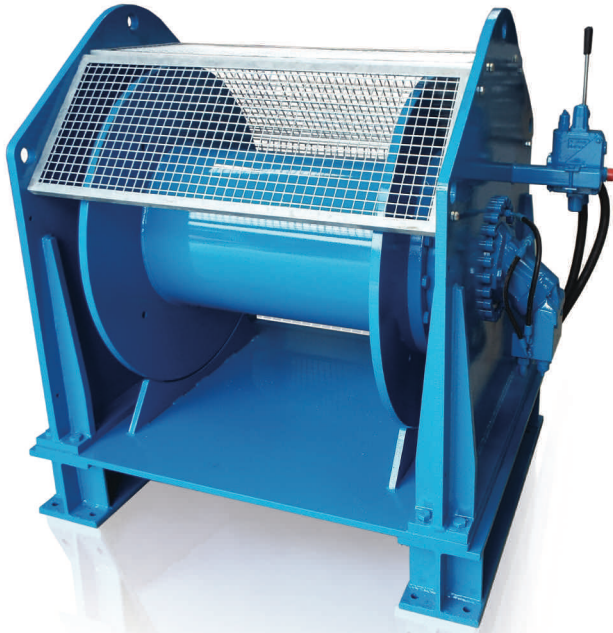


# RENTAL FLEET 15 TONNE HYDRAULIC WINCH



## Features

- All welded steel frame construction and fabricated base
- Compact design for minimum footprint
- Direct drive drum through in-line planetary gearing
- Rexroth axial piston hydraulic motor
- Manifold-mounted load control block with counterbalance valves and brake shuttle
- Automatic multi-plate transmission brake with nominal rating 24 tonnes on 1st layer
- Directional control valve with integral relief valve, arranged for open circuit
- Drum guard
- Winch weight 1200kg nett, excluding wire rope

## The winch is in accordance with:

- ISO 9001:2008
- Machinery Directive 2006/42/EC
- Pressure directive 97/23/EC
- LOLER
- PUWER

## Performance – CW-150 Winch

Rope layer	1	2	3	4	5	6
Static lift kg	16000	14500	13200	12000	11100	10300
Mean working diameter mm	536	592	648	704	760	816
Capacity (28mm wire rope)	44	94	148	207	270	338
Max rope speed m/min	17	19	21	23	25	27

Performance given at maximum supply of 160 L/min @ 230 bar

## Optional extras:

- Wire rope
- HPU
- Running line meter
- Deck weld base
- Sheaves & fairleads