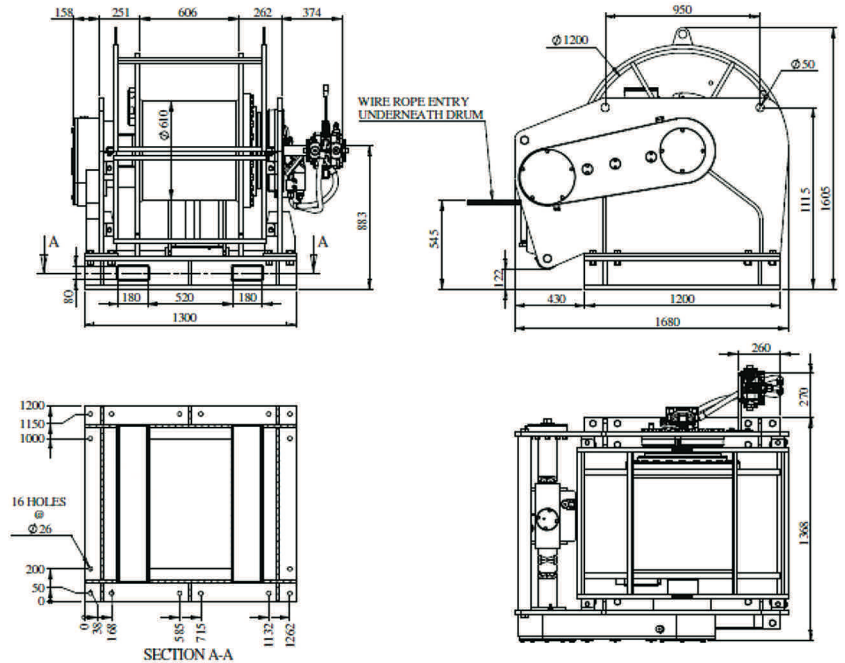
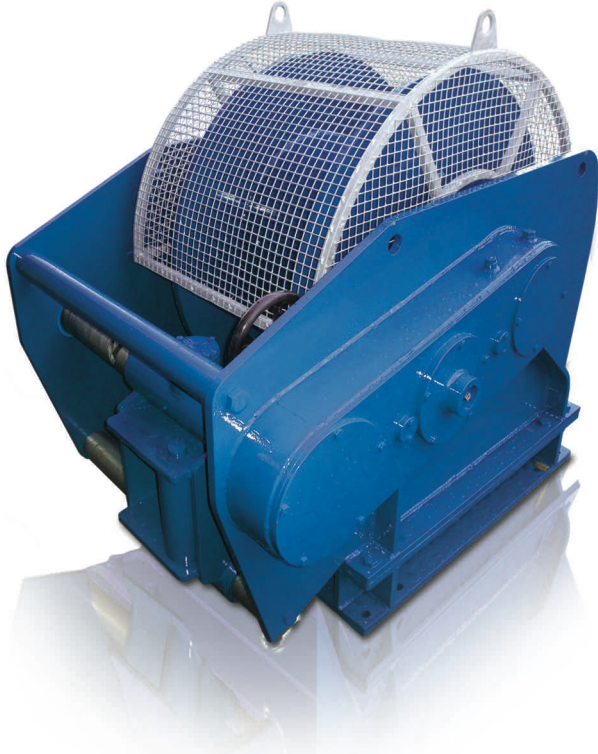


RENTAL FLEET 20 TONNE HYDRAULIC WINCH



Features

- All welded steel frame construction and fabricated base
- Compact design for minimum footprint
- Spooling gear synchronised to 32mm wire rope
- Direct drive drum through in-line planetary gearing
- Rexroth axial piston hydraulic motor
- Manifold-mounted load control block with counterbalance valves and brake shuttle
- Automatic multi-plate transmission brake with nominal rating 30 tonnes on 1st layer
- Directional control valve with integral relief valve, arranged for open circuit
- Drum guard
- Winch weight 3300kg nett, excluding wire rope

The winch is in accordance with:

- ISO 9001:2008
- Machinery Directive 2006/42/EC
- Pressure directive 97/23/EC
- LOLER
- PUWER

Optional extras:

- Wire rope
- HPU
- Running line meter
- Deck weld base
- Sheaves & fairleads

Performance – CWS-200 Winch

Rope layer	1	2	3	4	5	6	7
Static lift kg	20000	18750	17200	15800	14750	13750	12900
Mean working diameter mm	642	706	770	834	898	962	1026
Capacity (32mm wire rope)	35	73	115	161	210	262	318
Max rope speed m/min	17	19	20	22	24	25	27

Performance given at maximum supply of 180 L/min @ 230 bar